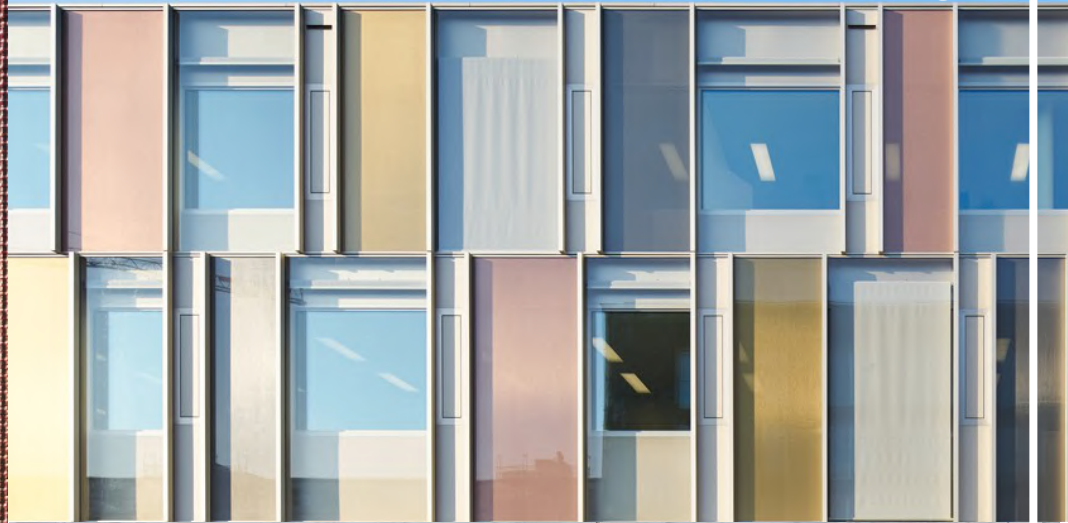


SEFAR® Architecture Vision

Decorative mesh laminated glass



8A Kitchen Rd
Dandenong South 3175
T +61 3 8788 5888
F +61 3 8788 5899
info@glassworksaustr.com
glassworksaustr.com

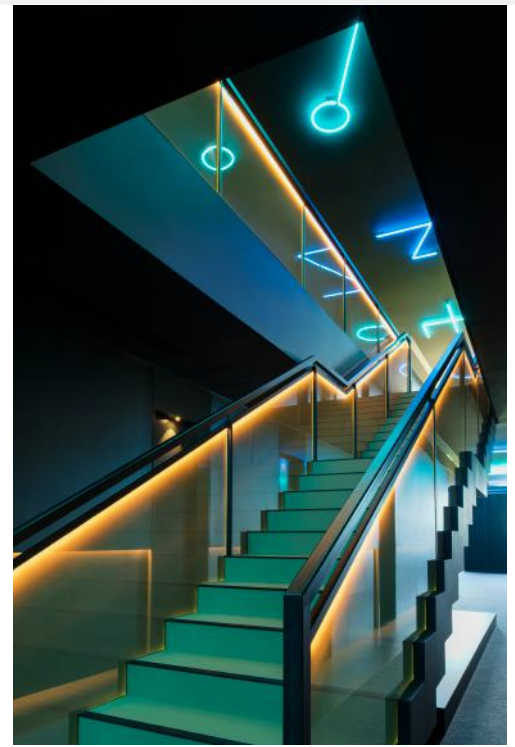
GLASSWORKS

Glassworks decorative range

SEFAR® Architecture Vision

Decorative mesh laminated glass

SEFAR® Architecture Vision is a quality decorative mesh from Switzerland laminated between glass to offer a variety of spectacular finishes incorporating metallic and distinctive textile patterns. Teamed up with any low iron glass or mirrored on the back, SEFAR® can achieve a variety of looks and levels of privacy. The mirror back, coupled with mesh, results in a particularly striking cladding solution.



Features

- Aesthetic and privacy properties; the laminated glass encloses a fabric with a metallic coating on one side that reduces the view in from outside while the side facing inside is easy to see out
- Achieves outstanding energy-transmission reduction values
- Provides shading properties for facade applications
- Offers bold metallic look when incorporated with either black or silver mirror
- A stunning alternative for privacy screening, balustrading & wall cladding

Applications

- Shower and kitchen splashbacks
- Office Partitioning
- Feature wall cladding
- Lift lobbies and lift cars
- Facade windows
- Screening
- Balustrades

Standard mesh types & colours (in detail)

	140 /25	140/50	260 /30	260 /55
Aluminium (AL)				
Printed Copper (PR CP)				
Printed Gold (PR GD)				

Specifications

- Maximum size: 5000 x 1500 available up to 2350 wide on request
- Available as single sided or double sided coating. Single sided offers one-way privacy
- Custom lamination with Clear, Low Iron and other glass types including mirror back
- Usual glass processing and toughening available
- Custom Pantone colours available for large projects

NB - swatches not to scale. To view true product we recommend requesting a laminated sample.

Mesh with glass examples



AL with Clear



PR CP on Mirror



PR GD with Low-Iron

PR AL 260/30 B

Both sides coated

Open area (%)

Thread diameter (µm)

Metal coating
(AL = Aluminium)

Printed